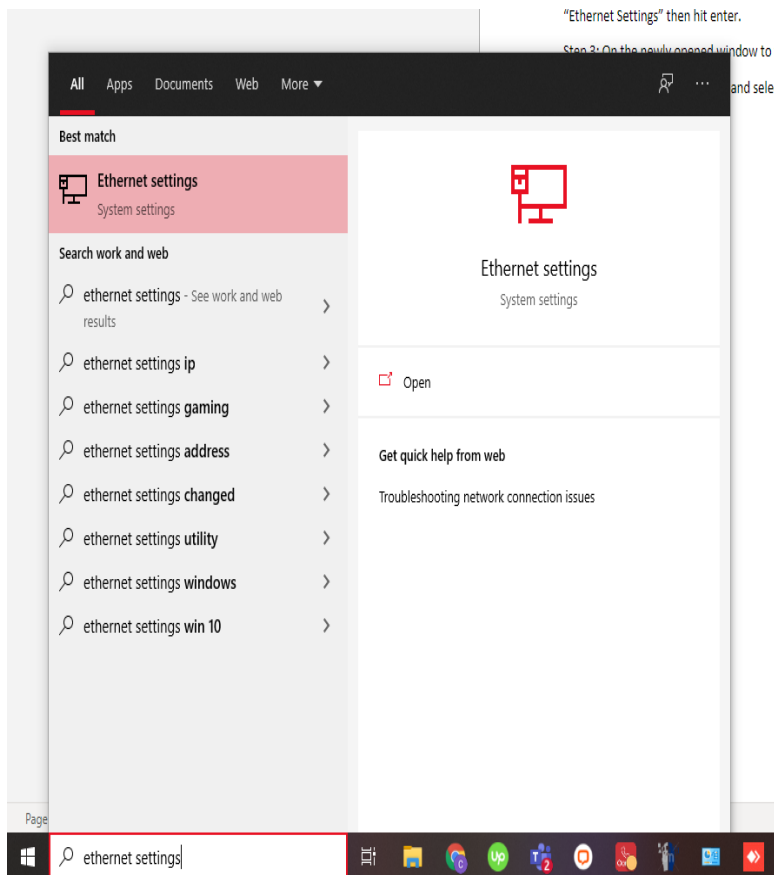


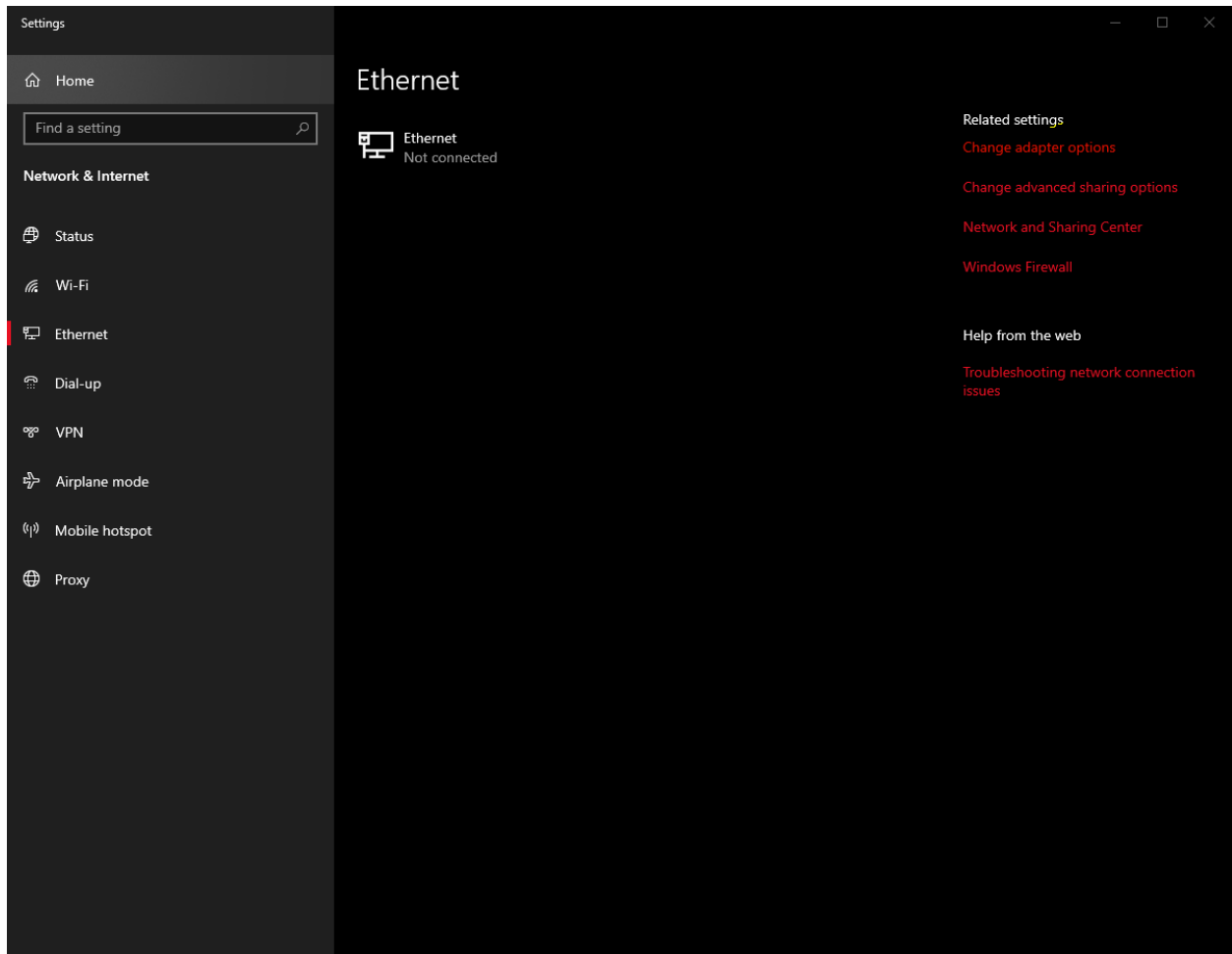
# How to upload the Image and Sound file to the different scenes of the Can-Am Temperature Screening Device

Step 1: Connect you Can-Am Temperature Screening Device to your PC with an ethernet cable.

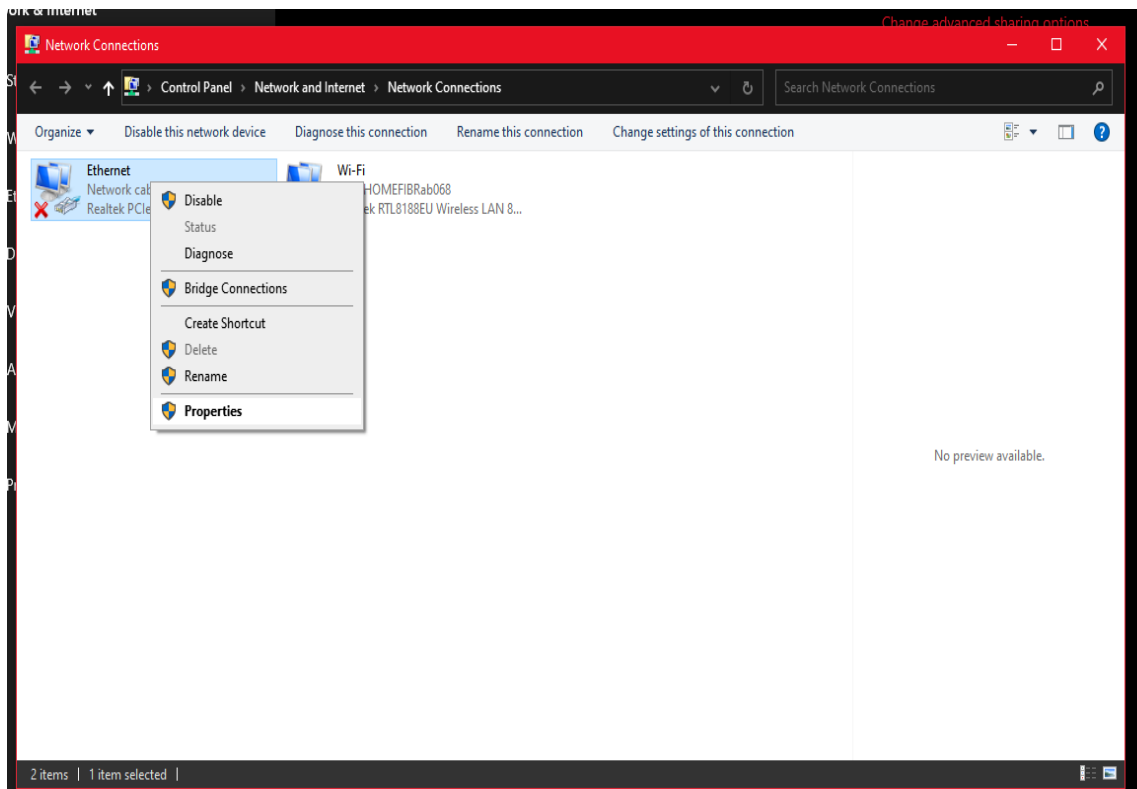
Step 2: Set a static IP address on your PC. On the search bar next to your PC's start button, type in "Ethernet Settings" then hit enter.



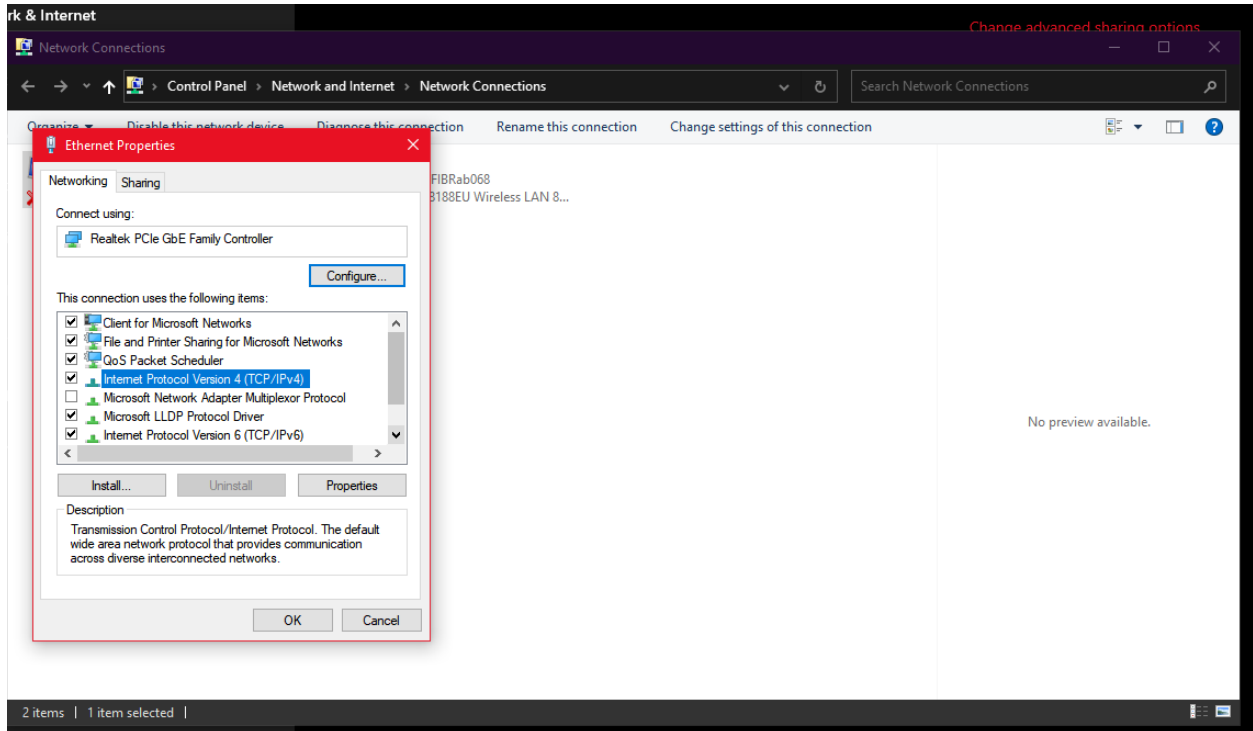
Step 3: On the newly opened window to the right, click on “Change Adapter Options”



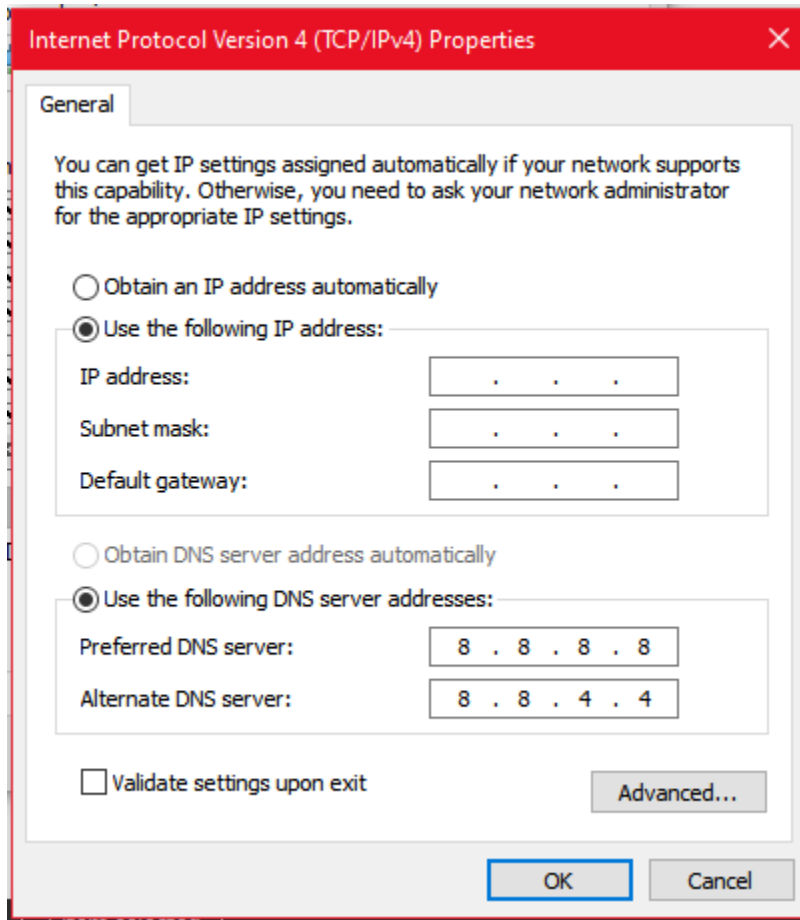
Step4: Right Click on “Ethernet” and select “Properties”

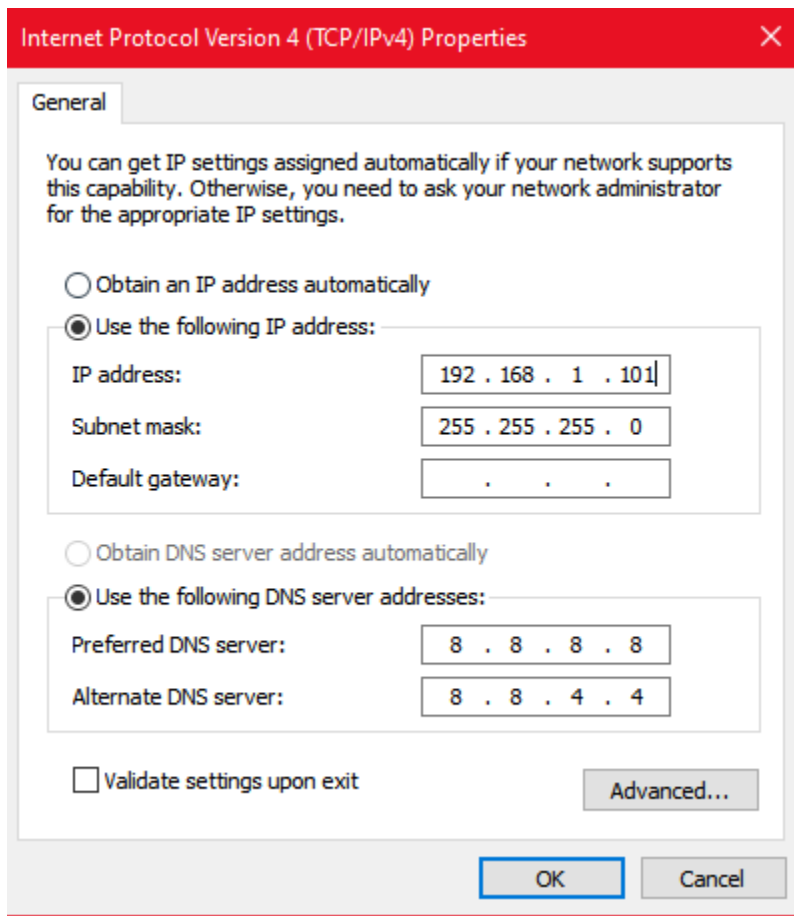


Step 5: Highlight IPv4 then click on “Properties”



Step 6: Select “Use the following IP address and on the empty field, type in 192.168.1.101. The subnet mask will be automatically be filled out. Click OK and close all the open windows.

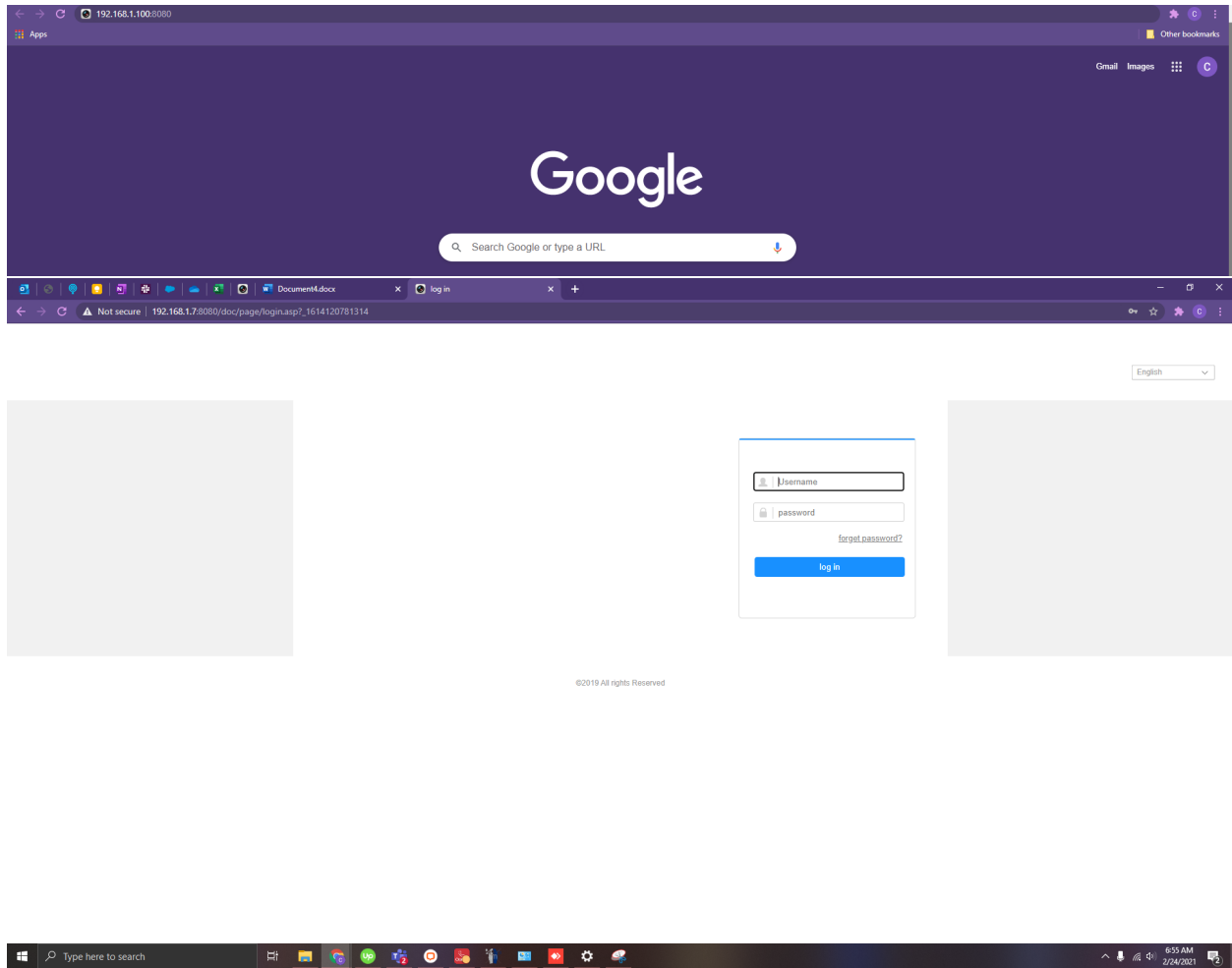




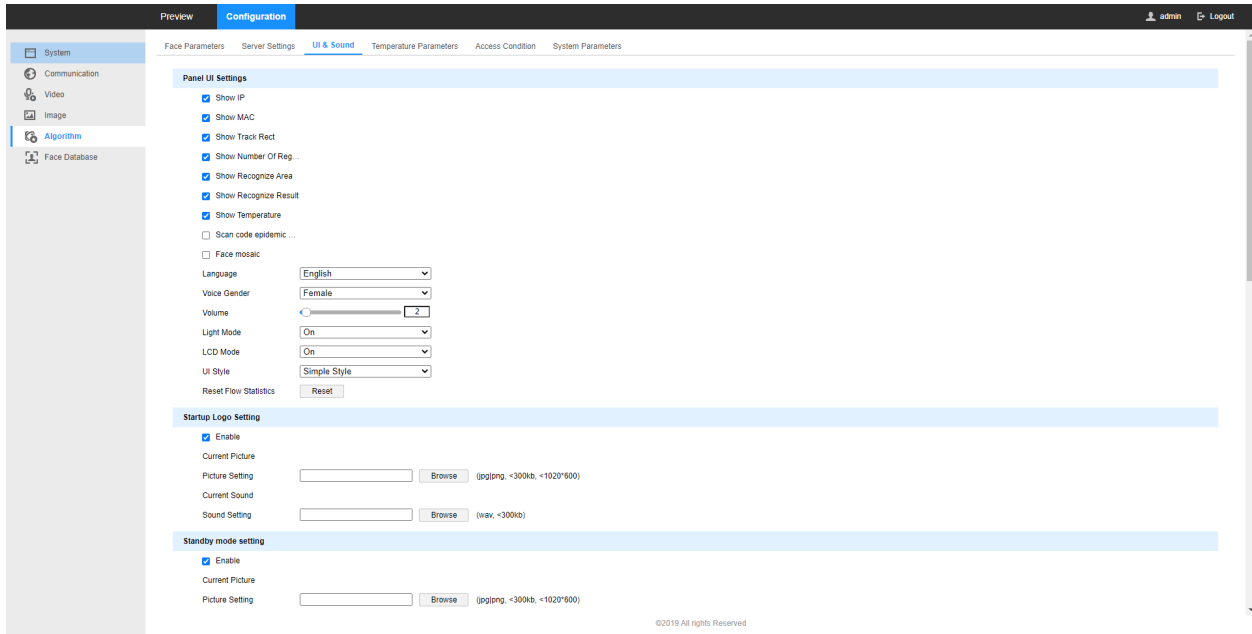
Step 7: Open up a web browser. On an empty address bar, type in 192.168.1.100:8080 to gain access to the device's web interface. It will take you to a log-page. Please use the admin credentials

Username: admin

Password: admin123456

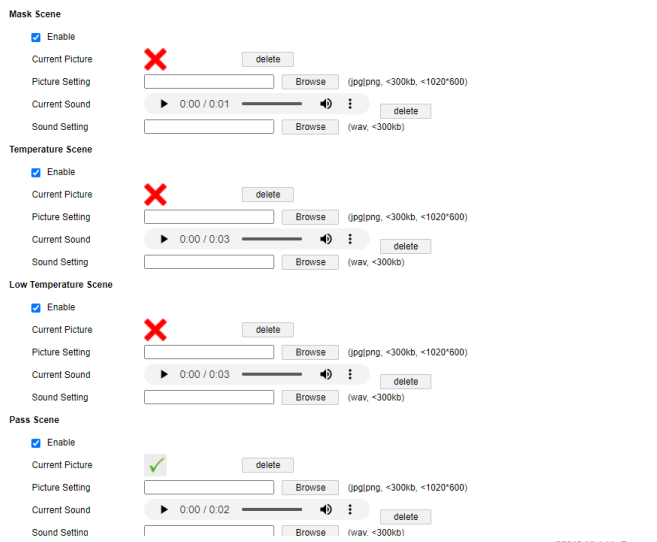


Step 8: Click on the "Configuration Tab". On the right panel, select the "Algorithm" tab, then click on "UI&Sound"



Step 9: Scroll down to see the “scenes” which you will need to upload the image and sound file to.

Step 10: Click on browse to look for the image and sound file you will need to upload.



Step 11: Make sure to hit save to apply the changes.